



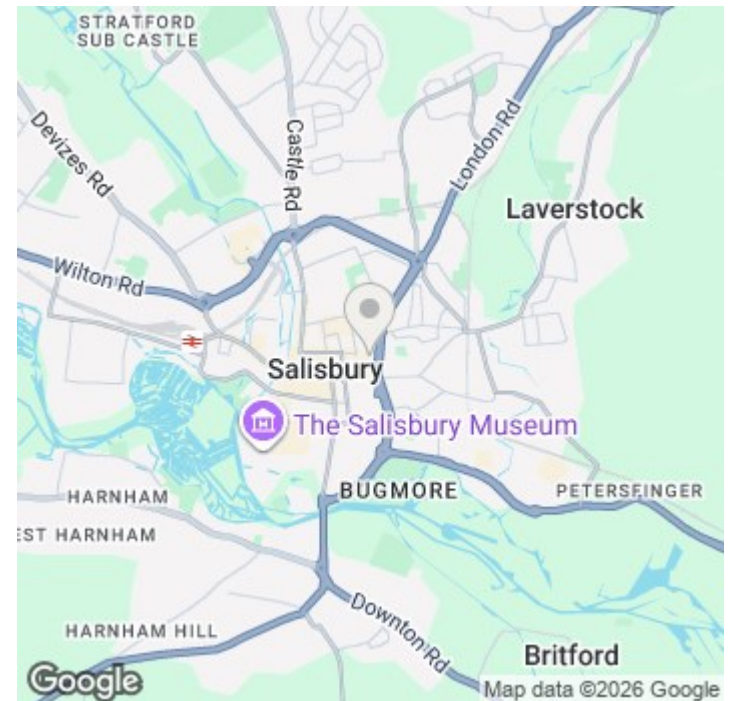
47 Winchester Street, Salisbury, Wilts, SP1 1HG

£1,100 PCM

About The Property

Set within a Grade II listed building in the heart of Salisbury, this well-presented two-bedroom ground floor flat offers well-proportioned accommodation, just a short walk from Salisbury Guildhall Square. Recently redecorated and fitted with new carpets, the property retains its period features while offering a clean and updated interior.

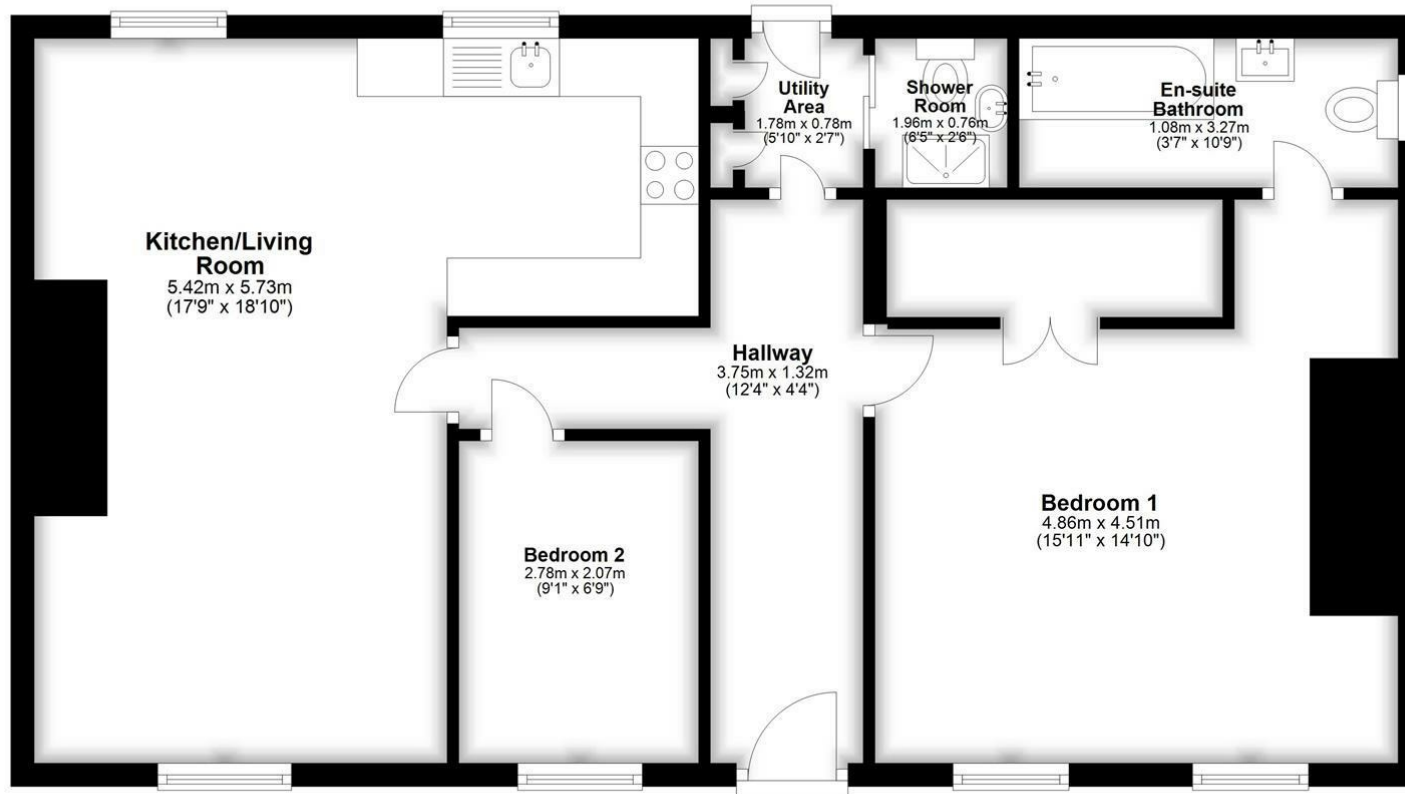
- Two double bedrooms
- Master with en-suite
- Open plan living/kitchen
- Feature fireplace
- Private patio area
- Allocated parking space
- Central Salisbury location
- EPC D
- Integrated fridge/freezer
- Ample internal storage





Ground Floor

Approx. 69.0 sq. metres (742.3 sq. feet)



Total area: approx. 69.0 sq. metres (742.3 sq. feet)

Further Information

Let available date: 8th June 2026
 NB: This date is provisional and will only be confirmed once referencing has been successfully completed.

Property type: Flat

Furnish type: Unfurnished

Deposit: £1,265

Local authority: Wiltshire Council

Council Tax: Band B

EPC: D(63)

Energy Efficiency Rating

	Current	Potential
Very energy efficient - lower running costs		
(92 plus) A		
(81-91) B		
(69-80) C		
(55-68) D	63	75
(39-54) E		
(21-38) F		
(1-20) G		
Not energy efficient - higher running costs		
England & Wales	EU Directive 2002/91/EC	